

Charlotte

JULY / AUGUST 2023

# HOME

DESIGN & DECOR®

## THE Kitchen+Bath ISSUE

*PLUS:*  
NUMBER ONE  
STUNNER

SPANISH  
EXPANSION



## YOUR FUTURE KITCHEN STARTS AT THE SUB-ZERO, WOLF AND COVE CHARLOTTE SHOWROOM.

A visit to our showroom is not an ordinary shopping trip. Instead, it is an immersive experience to help you realize the possibilities of your future kitchen. Whether you connect with us in person or virtually, a helpful and knowledgeable consultant will cater the visit to your precise needs, helping you discover what your kitchen might feel, look, and taste like.

The Sub-Zero, Wolf and Cove Charlotte Showroom is a place to start, experience, and bring your vision to life. No matter your style, find appliances that fit your taste. View an array of options and see what they look like in full-size kitchen vignettes. Experience how your appliances will look—and perform. Turn knobs. Open drawers. Ignite flames. Experience your favorites to determine the best fit for you. Seeing appliances in action is an important step of the journey. Finally, our chef-led demonstrations provide the perfect opportunity to ask questions of the experts who use the appliances every day.

Your relationship with the showroom doesn't end after your appliances are installed. You can expect a lifetime of support and helpful resources to help you gain the most out of your new appliances. This includes a chef-led use and care class where you will learn how to get the most out of your new Sub-Zero, Wolf, and Cove appliances.







**WE WELCOME YOU TO SCHEDULE AN  
APPOINTMENT AND VISIT OUR SHOWROOM.**

127 W. WORTHINGTON AVE., STE. 180, CHARLOTTE, NC  
704-375-6025 | [WWW.SUBZERO-WOLF.COM](http://WWW.SUBZERO-WOLF.COM)





# The Designers Marketplace

trade and retail showrooms







## YOUR COMPLETE KITCHEN AND BATH DESIGN STUDIO

9481 Yarborough Road, Fort Mill, SC 29707 | 803-681-5100  
[thedesignersmarketplace.com](http://thedesignersmarketplace.com)







mynewfloor.com

DISCOVER WHAT'S POSSIBLE



CURATED FOR YOU.

## WE MAKE FLOORING EASY.

Choosing the right flooring or carpet can be overwhelming. MyNewFloor.com simplifies your search with our Curated Collection of **wood, carpet, vinyl and tile** from leading manufacturers – all for one low all-inclusive price. Our **design-focused team** is here to help you select the products that fit your home and budget. And our **certified installers** will do the job right – quickly, accurately and professionally.

Visit one of our Charlotte area showrooms, and you'll see why thousands of satisfied customers have chosen MyNewFloor.com as their go-to flooring partner.

704.325.5952

**SOUTH CHARLOTTE**

Blakeney Town Center  
9716-C Rea Road  
Charlotte, NC 28277

**SOUTH END**

Factory South  
1300-C South Boulevard  
Charlotte, NC 28203

**LAKE NORMAN**

Village at Oakhurst  
9606-A Bailey Road  
Cornelius, NC 28031

mynewfloor.com





*Installs Everywhere.*

**CHANGES EVERYTHING**



  
**General Shale Brick®**

Call or visit today  
704-599-2877  
10800 Reames Road, Charlotte, NC 28269



Scan to learn more at:  
[generalshale.com/old-brick-originals](http://generalshale.com/old-brick-originals)



# JULY/AUGUST 2023



68



46

## FEATURES

### 46 IN STARK CONTRAST

Striking a balance between glam and livability, every room is a masterpiece in this Charlotte home designed by Hannah McCann.

### 58 LOOKING GLASS

One couple calls on Artistic Interiors to create a comfortable and sophisticated gathering place on Lake Norman.

### 68 THE SPANISH EXPANSION

Designer Jennifer Felts of Habitude Interiors gives a SouthPark home a casual yet cosmopolitan vibe with a subtle Spanish influence.





HIGH COTTON  
HOME CO.

INTERIOR DESIGN • FURNITURE GALLERY

PARK ROAD SHOPPING CENTER 4247 PARK ROAD #295, CHARLOTTE, NC 28209  
704.335.1220 @HIGHCOTTONCLT WWW.HIGHCOTTONHOMECOMPANY.COM



# JULY/AUGUST 2023



## DWELL

### 21 MARKET

From runners to wallpaper and hardware to range hoods, we've bathed our market section in details for the kitchen and bath.

### 33 DESIGN

Pursley Dixon Architecture gives a dated Charlotte kitchen a bright and sunny update.

### 38 PALETTE

Deliciously dark and daring, plum is the perfect union of dazzling and soft.

### 40 DESIGN BOARD

Designer Claudia Ricciardone infuses a town-and-country estate with classic and contemporary silhouettes and textiles.

## RESOURCES

### 80 ART IN THE CITY

Visitors nationwide flock to Momentum Gallery in Asheville to see the finest contemporary art.

### 82 BUNGALOW BEAUTY

The Majestic Bath teams up with designer Wanda Horton to bring a Monroe Craftsman bungalow to life.

### 84 FADE TO BLACK

DCI Home Resource explains why black is the timeless neutral homeowners want in their kitchens.

### 86 CLEVER CRAFTSMAN

Offering handcrafted pieces created by artisans, Craftsman Cabinets & Furniture guarantees that every piece is going to be special.

## CONTRIBUTORS

### 88 PREMIERE DESIGN RESOURCE

Elaine Greene  
Destination by Design

### 90 ROOM SERVICE

Beth Conant  
Mid-Moroccan Mix

### 92 SOUL FOOD

Jim Noble  
Summer Crush

## SPOTLIGHT

### 14 FROM THE EDITOR

### 94 ARTS & EXHIBITIONS



MAKE ROOM FOR ALL OF YOU



CALL OR VISIT US ONLINE TODAY TO SCHEDULE YOUR COMPLIMENTARY DESIGN CONSULTATION

**Charlotte** 224 East Boulevard 704.527.5579  
Malu Grasso – Interior designer @malugrassodecor  
Claire Williams – California Closets designer  
Victoria Moon – Photographer @victoriamoonphoto

CALIFORNIACLOSETS.COM



**CALIFORNIA CLOSETS®**

© 2023 California Closet Company, Inc. Each California Closets® franchised location is independently owned and operated.





**ON THE COVER:**  
Designer Amy Lee of Artistic Interiors designed this beautiful modern kitchen for her clients' Lake Norman home (page 58).



There's something about being in someone's kitchen that feels overtly intimate. You know as you sit with that friend or family member that the space you're in holds countless hours of quiet weekend mornings, private conversations, loud holiday meals, and never-ending cups of coffee that leave rings on the Sunday paper. These moments are sacred to the inhabitants of the home, and now you too are a memory in the space.

Daily lives carry on in the inches and corners of our kitchens, and our days begin and end in the privacy of our bathrooms, so the thought we devote to making these rooms beautiful and livable is valid—which is why we dedicate an entire issue to recognizing stunning kitchen and bathroom design and the way it impacts our lifestyle.

Whether it's tile or wallpaper, barstools or hardware, the devil is in the details when it comes to designing these rooms. Picking just a handful of our favorites to feature proved to be a challenge, but we're confident the inspiration is clear. From classic black-and-white kitchens in Myers Park and Lake Norman to a warm and modern design in SouthPark, this issue is bathed in spectacular and impressive projects.

Cheers to making the most intimate, the most inviting.

*Blake & Anne Marie*

Blake Miller and Anne Marie Ashley  
Co-Editors-in-Chief





HELEN ADAMS REALTY



Serving Charlotte's Luxury Home Market Since 1975

Woman Founded. Family Owned. Locally Operated.

[helenadamsrealty.com](http://helenadamsrealty.com) | [@helenadamsrealty](https://www.instagram.com/helenadamsrealty)



# HOMIE

## DESIGN & DECOR®

homedesigndecormag.com

JULY/AUGUST 2023

VOL 23 NO 4

### CO-EDITORS-IN-CHIEF

ANNE MARIE ASHLEY  
BLAKE MILLER

### ASSOCIATE EDITOR

KARIN SIMONEAU

### ART DIRECTOR

LINDSAY RICHARDS

### PUBLISHER

MICHAEL KOOIMAN

### ASSOCIATE PUBLISHER

OONAGH MURRAY

### PRODUCTION COORDINATOR

SHELLEY KEMPER

### CONTRIBUTORS

BETH CONANT  
ELAINE GREENE  
JIM NOBLE

### WRITERS

LEE RHODES  
BRANDY WOODS SNOW  
CHRISTINA SPRATT SPENCER  
ROBIN ANDERS SUTTON  
DANA W. TODD

### PHOTOGRAPHY

MICHAEL BLEVINS  
HEATHER ISON  
DUSTIN AND SUSIE PECK  
LAURA SUMRAK

704-741-2774



facebook.com/CharlotteHDD



@homedesigndecor\_charlotte

All contents copyright 2023, Curated Media, LLC. No part of this publication may be reproduced in whole or in part without the express written consent from publisher. Mention of any product or service does not constitute endorsement from Home Design & Decor® Magazine. The information contained in this publication is deemed reliable from third party sources, but not guaranteed. Curated Media, LLC does not act as an agent for any of the advertisers in this publication. It is recommended that you choose a qualified remodeling, home furnishings or home improvement firm based on your own selection criteria.

Curated Media, LLC, d.b.a. Charlotte Home Design & Decor® Magazine, will not knowingly accept advertising for real estate which is a violation of the Fair Housing Act. All real estate advertising in Curated Media, LLC, d.b.a. Charlotte Home Design & Decor® Magazine, is subject to the Fair Housing Act which states "We are pledged to the letter and spirit of U.S. policy for the achievement of equal housing opportunity throughout the nation. We encourage and support an affirmative advertising and marketing program in which there are no barriers to obtaining housing because of race, color, religion, sex, handicap, familial status, or national origin."

Curated Media, LLC, d.b.a. Charlotte Home Design & Decor® Magazine, does not act as an agent for any of the realtors or builders in this publication. It is recommended that you choose a qualified realtor to assist you in your new home purchase.



ORIGINAL ART  
ACCEPTING  
CUSTOM WORK



Amy Sullivan Weishaar  
AWHITEHAREDESIGNS.COM





UNRIVALED

LUXURY

Experience the next level in luxury real estate when you partner with us.

#1 privately owned real estate company in the country. Founding member of Leading Real Estate Companies of the World and Luxury Portfolio International.



**YORK | \$3,000,000**  
2876 Watergarden Street  
Martina Linford | 980.307.3211



**CHARLOTTE | \$1,990,000**  
7111 Summerhill Ridge Drive  
Jean Benham | 704.363.2938



**CHARLOTTE | \$1,600,000**  
1823 Ewing Avenue  
Kim Trouten | 704.877.8719



**CONCORD | \$975,000**  
34 Spring Street NW  
Anita Sabates | 704.562.2515



[allentate.luxuryportfolio.com](http://allentate.luxuryportfolio.com)

A HOWARD HANNA PARTNER







**ISABELLA**  
FINE LINENS • INTERIORS • DESIGN

115 CHEROKEE ROAD | SHOP ONLINE: [ISABELLASTYLE.COM](http://ISABELLASTYLE.COM) | 704.377.4919





# DWELL



THE BOLD LOOK  
OF **KOHLER**®

## INTUITIVE. IMMERSIVE. ICONIC.

The Statement™ showering collection with Anthem™ controls and valves feature unexpected designs, indulgent spray options, and a range of universal forms. The versatile portfolios are meticulously crafted to fit all global plumbing standards, opening the door to truly seamless specification and unfettered creativity. Visit our virtual portal to explore the possibilities and unleash your imagination.

THE  
*Majestic*  
BATH

KITCHEN AND BATH SHOWROOM

621 South Sharon Amity Road, Charlotte, North Carolina 28211  
704-366-9099 | [themajesticbath.com](http://themajesticbath.com)



# NUMBER ONE STUNNER

THESE STUNNING PICKS FOR YOUR KITCHEN AND BATH ARE CERTAIN TO TAKE YOUR STRICTLY FUNCTIONAL ROOMS TO STRICTLY GORGEOUS.

PRODUCED BY ANNE MARIE ASHLEY







DESIGNER  
FAVE

**Top:** Malayer Rug /  
elikorugsbydavidariel.com  
**Right:** Jean-Michel  
Basquiat Samo Skull /  
ruggable.com  
**Bottom:** Summer Solstice  
Vintage Runner /  
houseofnomaddesign.com



FOUR STORY INTERIORS



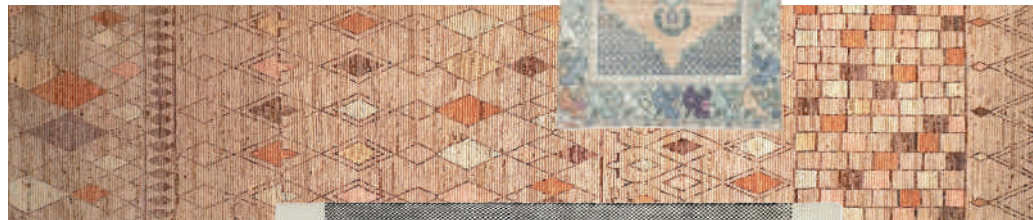
**Above Left:** Hand-Knotted Moroccan  
Runner / charlotteruggallery.com  
**Above Right:** Irregular Dots Runner /  
lulundgeorgia.com

# RUNAWAY

SOMETIMES THE LEAST EXPECTED  
DETAIL PACKS THE MOST  
UNEXPECTED PUNCH.



**Right:** Vintage Runner / crazyforrugs.com  
**Middle:** Hand-Knotte Runner / charlotteruggallery.com  
**Bottom:** Joelle Runner / lulundgeorgia.com



**Left:** Morris & Co.  
Pimpernel Runner /  
ruggable.com





# LYNN BLACKWELL

INTERIOR DESIGN

STUDIO + SHOWROOM



LEE INDUSTRIES   LILLIAN AUGUST FOR HICKORY WHITE   HICKORY CHAIR  
HICKORY WHITE   CURREY & COMPANY   THIBAUT DESIGN

LYNNBLACKWELL.COM | 223 MAIN ST. FORT MILL, SC 29715 | 803.802.4663





**Right:** Curate Barstool /  
centuryfurniture.com

**Left:** Luna Barstool /  
houseofnomaddesign.com  
**Bottom:** Wyndham Swivel /  
Arteriors.com

**Above:** Villa &  
House Barstool /  
bungalow5.com  
**Below:** Centro  
Counter Stool /  
houseofnomad  
design.com

HOUSE OF NOMAD

# BAR NONE

THE MOST INVITING SEAT IN THE HOUSE  
IS AT THE CENTER OF HOSPITALITY.

DESIGNER  
FAVE

**Top:** Sunpan Carter  
Bar & Counter Stool /  
sunpan.com  
**Right:** Linville Falls  
Counter Stool /  
hookerfurniture.com

**Right:** Furniture  
Classics Counter  
Stool / perigold.com

**Left:** Regan Barstool /  
globalviews.com





**DCI** Design Centers International  
Home Resource

*a Partnership*  
from Planning to Perfection

**CUSTOM CABINETS | APPLIANCES | PLUMBING | TILE**  
SUB-ZERO - WOLF - COVE | THERMADOR | BOSCH | BLUE STAR | MIELE | LACORNUE | FULGOR



704.926.6000 | [DCIHOMERESOURCE.COM](http://DCIHOMERESOURCE.COM) | 1300 SOUTH BOULEVARD - SUITE C, CHARLOTTE, NC 28203 | MON-FRI 9AM-6PM



## MARKET



**Above:** Unlacquered Brass and Bone Handles / [cb2.com](http://cb2.com)



**Above:** Raelle Knob in Matte Black or Brass / [cb2.com](http://cb2.com)



**Above:** Moen Tenon Faucet / [ferguson.com](http://ferguson.com)



**Left:** Sea Glass Knob / [hooksandknobs.com](http://hooksandknobs.com)



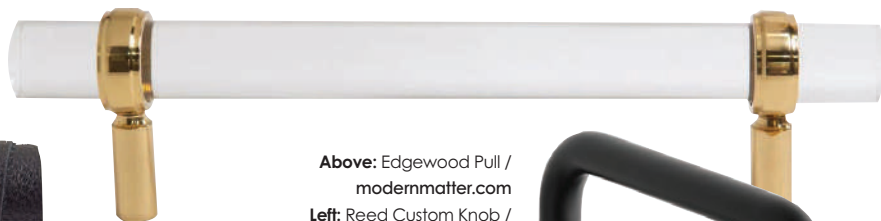
**Above:** Honeycomb Pull / [designtheoryhw.com](http://designtheoryhw.com)

# EASY-WARE

WHEN CREATING THE JEWEL BOX OF THE HOME, DON'T FORGET THE JEWELRY.



**Above:** Swan Towel Ring / [anthropologie.com](http://anthropologie.com)  
**Right:** Wrapped Leather Knob / [cb2.com](http://cb2.com)



**Above:** Edgewood Pull / [modernmatter.com](http://modernmatter.com)

**Left:** Reed Custom Knob / [modernmatter.com](http://modernmatter.com)

**Right:** Kohler Purist Faucet in Matte Black / [themajesticbath.com](http://themajesticbath.com)



DESIGNER  
FAVE



LAURA SUMIRAK



# COLEY HOME

MADE IN NORTH CAROLINA



VISIT OUR CHARLOTTE SHOWROOM • 2132 THRIFT ROAD, SUITE C • [COLEYHOME.COM](http://COLEYHOME.COM)

ARTWORK BY HIDEELL BROOKS





**Right:** Superiore Range Hood in Matte Brown / [superiore.us](http://superiore.us)

**Lower Right:** Smeg Chimney Hood in Majolica / [smeg.com](http://smeg.com)



**Top Right:** Walnut Hood with Brass Accents / [hoodsly.com](http://hoodsly.com)

**Above:** Ilve Majestic Hood in Blue Grey / [ilveusa.com](http://ilveusa.com)



CAREN BISTANEY DESIGN

**Below:** Custom Brass Barrel Half Round Range Hood / [riversidesheetmetal.com](http://riversidesheetmetal.com)



# HOOD WINK

BRING SOME FOCUS INTO THE HEART OF THE HOME.



DESIGNER  
FAVE

**Top Left:** Midnight Range Hood / [futuofuturo.com](http://futuofuturo.com)

**Bottom Left:** Custom Paster Hood / Design by Studio McGee



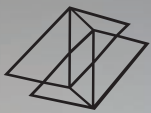
**Above:** Quintana Range Hood / [thompsontraders.com](http://thompsontraders.com)



**Above:** Viking 5 Series Range Hood in Forrest Green / [viking.com](http://viking.com)

**Left:** Artisan AT10 Custom Range Hood / [worldcoppersmith.com](http://worldcoppersmith.com)



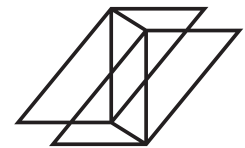


MOMENTUM  
GALLERY



Christian Faur

© Chihuly 2023  
Laguna Persian Studio Edition



MOMENTUM  
GALLERY

DOWNTOWN ASHEVILLE

Paintings | Sculpture | Original Prints | Studio Furniture

MOMENTUM GALLERY offers a curated collection of museum quality works that celebrate material-based traditions rich in this area and reflect a contemporary aesthetic in harmony with our natural surroundings.

52 Broadway | 828.505.8550 | [momentumgallery.com](http://momentumgallery.com)

[momentumgalleryasheville](#) [@momentumgallery](#)



Samantha Keely Smith



## MARKET

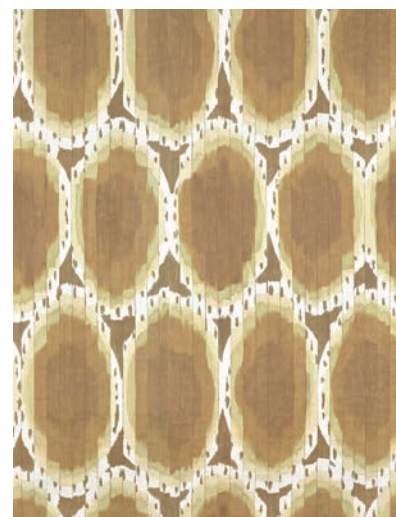


**Top:** Red Coat / [annikareed.com](http://annikareed.com)

**Bottom:** Colorante in Midnight / [clarke-clarke.sandersondesigngroup.com](http://clarke-clarke.sandersondesigngroup.com)



CAROLINE BRACKETT DESIGN



DESIGNER  
FAVE



**Top:** Attoll / [pierrefrey.com](http://pierrefrey.com)

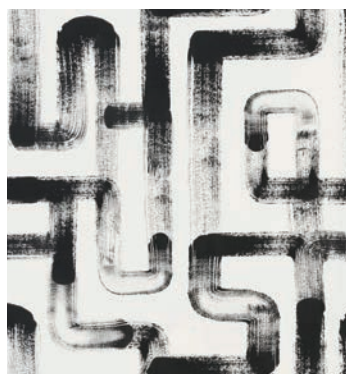
**Bottom:** Good Fortune / [ferrickmason.com](http://ferrickmason.com)

## WALLED IN

WHILE PAINT CAN BE HANDY,  
WALLPAPER CERTAINLY IS DANDY.



**Above:** Stripes / [rebelwalls.com](http://rebelwalls.com)



**Right:** Bloomfield / [houseofharris.com](http://houseofharris.com)

**Below:** Opulence in Pink Marble / [rebelwalls.com](http://rebelwalls.com)

**Left:** London Metro Lines / [livetteswallpaper.com](http://livetteswallpaper.com)







Banner Elk

MARY TOBIAS MILLER  
INTERIOR DESIGN

Key Largo

@marytobiasmiller

Charlotte - 1530 East Blvd - 704-332-3731

@abodebymtm



Comfort & enduring good looks...

B E R N H A R D T  
INTERIORS



Charlotte/Pineville, NC • Hickory, NC  
[goodshomefurnishings.com](http://goodshomefurnishings.com)



# Brighter *Days*

CHARLOTTE HOMEOWNERS ENLIST A TALENTED DESIGN TEAM TO GIVE THEIR KITCHEN A MAJOR FACELIFT.

WRITTEN BY KARIN SIMONEAU



An existing office space and working pantry were combined to create a larger, more functional pantry. The antique table, sourced by Pursley Dixon Ford Interiors, doubles as an island and workspace. Custom shades are by Classic Creations and light fixtures are from Paul Ferrante.



WHEN PURSLEY DIXON Architecture completed a new mountain home for their client, the experience was so positive that the homeowners quickly asked them to breathe new life into the kitchen of their Charlotte home. With an inherent level of comfort and trust already in place, the project would be seamless.

“The vision was to create a brighter and happier space,” says Ken Pursley, principal architect. “The original kitchen was dark and dated, and the allocation of space for the pantry was lacking while the office was more ample than needed.”

Pursley made the existing office into a larger and more accessible pantry, relocating the door for better flow in the kitchen. The bar was moved into a converted screened porch to pull some of the entertaining energy out of the kitchen and into the adjacent space. “Often, the kitchen is a magnet for gathering, and elements like the bar draw people away from the kitchen, creating less opportunities for traffic jams,” says Pursley. Because the patio was made into an interior living space, the stone archway housing the grilling space had to be repurposed. “The solution was



**ABOVE:** A resplendent custom-designed door leads from the kitchen to the pantry, allowing for a seamless flow between the spaces.



**LEFT:** The once dark and dated kitchen was transformed into a bright and happy gathering space. Visual Comfort pendants hang above the island, and sconces are from Urban Electric Co. Barstools are swathed in a pretty blue fabric by Galbraith & Paul.



# SUMMER SALE

20-50% OFF ALL IN-STOCK OUTDOOR FURNITURE

DOZENS OF COLLECTIONS IN STOCK, HUNDREDS MORE VIA CUSTOM ORDER



## OASIS OUTDOOR

FURNITURE & ACCESSORIES | POOL & SPA | GRILLS

11729 CAROLINA PLACE PARKWAY PINEVILLE, NC

704.541.0892

OASISOUTDOOR.COM





**LEFT:** The sunny breakfast room serves as a dining area and workspace. The custom table is by Jeff Franz and the chairs are from Hickory Chair. A Visual Comfort chandelier and floor lamps provide lighting and a rug from RH lies underneath.

**BOTTOM:** Once a grilling area built into the brick archway on the covered porch, the space now functions as a bar. The cabinets are custom by Red Industries with hardware from Rocky Mountain. Light fixtures from Urban Electric Co.



to retain the stone architecture but include a bar area easily accessible from the kitchen, sitting, and living rooms,” says Bronwyn Ford, principal of Pursley Dixon Ford Interiors.

The dual-purpose keeping room was reinvented as a sunny breakfast room and workspace, with a large upholstered-door

cabinet to hold files as well as extra dishes and placemats. “We love concealing these utilitarian items in an elegant, custom piece of furniture,” says Ford.

A vintage Belgian oak and bluestone table integrated into the pantry serves as an island and extra workspace, as well. A marble plinth elevates the island to

counter-height, and thin blackened steel shelves underneath create more storage. “Incorporating this piece with its timeworn patina adds warmth and interest to a space that may otherwise feel too perfect,” says Pursley.

The revamped, ultra-functional space also comes with ultimate beauty and livability. Ford loves the small details and thoughtful touches that celebrate form and function in equal parts, while Pursley appreciates the simplicity of the final design and layout. “The kitchen is such an integral part of a home,” he says, “and we shouldn’t hesitate to make it one of the most beautiful spaces to be in.” ♦



# COX DOOR COMPANY

HOME | COMMERCIAL | RESIDENTIAL | SALES | SERVICE



Cox Door is 35 years in the Charlotte market. We stand behind each and every door, install, service and preventative maintenance that we do. With great craftsmanship comes great responsibility. This is why we also stand behind the quality accessories that are part and parcel of these great doors. We fix, maintain, source and install any door or part that you need. From coils, to openers, advice of maintenance; call us and we will send our experts in the field to you.

COXDOOR.COM | 704-821-8898 EXT. 213 | PHILCOX@COXDOOR.COM





This moody dining room designed by Jess Ebert of Four Story Interiors masterfully marries earthy plum-hued curtains with cool, tranquil blues.



# POSH PLUM

FROM EARTHY TONES OF DEEP PURPLE AND BROWN TO BRIGHT PUNCHES OF BERRY AND LAVENDER, THIS HUE IS RIPE AND READY FOR PICKING.

WRITTEN BY CHRISTINA SPRATT SPENCER  
PRODUCED BY ANNE MARIE ASHLEY

An enveloping balance between the cool and indulgent depths of indigo and the earthy warmth of violet, this moody and mysterious hue is deliciously dark and daring. Even a dollop of potent plum tones evokes subtle elegance and an air of sumptuous surroundings. The shady range sings with pairings of canary and chartreuse, or oozes pure romance with ombre tones of rose and raspberry; it's a luscious contrast with whisper blues and lavender, and is definitively regal with jewel-toned emerald, peacock, and persimmon. Plum feels at home in its dark pastel magenta family but exemplifies the perfect union of bright and muted.

1. Ruby Rug / \$999 for 9x12 / [westelm.com](http://westelm.com)
2. Faces Throw / \$170 / [sundaycitizen.co](http://sundaycitizen.co)
3. Handcrafted Saki Set / \$715 / [wolfandbadger.com](http://wolfandbadger.com)
4. Cloud Nine Mirror in Benjamin Moore Super Nova / to the trade / [wildwoodhome.com](http://wildwoodhome.com)
5. Dead Flat Matte Paint in Pelt / \$186 per gallon / [farrowandball.com](http://farrowandball.com)
6. Peter Dunham Fabrics / to the trade / [schuylersampertontextiles.com](http://schuylersampertontextiles.com)
7. French Bulldog Sculpture in Metallic Plum / \$224 / [wolfandbadger.com](http://wolfandbadger.com)
8. Grasscloth Wallcovering in Thorn / inquire for price / [windyococonnor.com](http://windyococonnor.com)



8



5



6



7





Hand-Painted Lucite Accessories

Backplates | Knobs | Ting Ting Tassels | LUCiTE LiTTLEs | Custom Work

STANDOUTCREATIVEDESIGN.COM





## CLAUDIA *Ricciardone*

Claudia Ricciardone, the founder and lead designer at Claudia Josephine Design, is passionate about eco-friendly design and can expertly execute a mix of old, new, vintage, and antique. “With our company’s green focus, I steer clients toward classic, sustainable, and ethically produced selections instead of ‘fast’ furnishings that end up in landfills,” she admits.

For this town-and-country estate project, Ricciardone wanted to honor the home’s traditional architecture while infusing the interiors with a mix of classic and contemporary silhouettes and textiles. “In the formal living room, Schumacher’s Pyne Hollycock chintz is a nod to traditional design sensibilities and was the inspiration for our room,” she explains. “We paired it with a modern Ming-style coffee table, pops of color, and neutral linen window treatments to keep it fresh.” A custom wool rug by Artisan Rug Gallery in Charlotte anchors the space while the homeowner’s antique desk brings a personal touch to the room. “What I adore about this space is that it proves that formal doesn’t have to feel stuffy or uncomfortable,” says Ricciardone. “You can have fun and still have a classic, stylish room. It can also be family friendly. This room was designed to sustain frequent use by our client’s two children and three cats!”



1. Glass-Top Side Table / to the trade / [sherrill-occasional.com](http://sherrill-occasional.com)
2. Blythe Chinoiserie Table Lamp / \$1,619 / [ralphlauren.com](http://ralphlauren.com)
3. Jurgan Rug in Navy / to the trade / [pattersonflynn.com](http://pattersonflynn.com)
4. Elizabeth Tufted Sofa / to the trade / [highlandhousefurniture.com](http://highlandhousefurniture.com)
5. Acorn Gilded Mirror / \$1,980 / [scullyandscully.com](http://scullyandscully.com)
6. Brass Bowl / \$24 / [potterybarn.com](http://potterybarn.com)
7. Throw Pillow in Schumacher Fabric / \$360 / [finelinens.com](http://finelinens.com)



Call 704-363-7551 or scan this  
code with your phone camera  
to set up a FREE Nighttime  
Light Demo and get

**\$250 OFF\***  
your install!



Landscape Lights



Pathway Lights



Deck & Pool Lights



**IMAGINE**  
OUTDOOR LIGHTING

## Dramatic Landscape Lighting

Enhance the beauty, safety, and security of your home.

Schedule a free design consultation at [imagineoutdoorlighting.com](http://imagineoutdoorlighting.com)

\*Terms and conditions may apply.



# Cotswold MarketPlace

RETAIL & DESIGN CENTER

HOME DECOR   UPHOLSTERY   ARTWORK   WALLPAPER   LIGHTING   GIFTS



200 N. SHARON AMITY | CHARLOTTE, NC | 704.365.3331

COTSWOLDMARKETPLACE.COM





*Imagine your home,* **BEAUTIFULLY ORGANIZED.**



*Schedule a free in-home design consultation.* | 704-741-8013 | [closetsbydesign.com](http://closetsbydesign.com)

**40% off plus 10% extra on orders of \$1,000 or more.**

12 months financing. Offer Valid until June 30. Restrictions apply.



MARK PHELPS

MARKPHELPSINTERIORS.COM

*Interiors*

704.333.5010







# INTERIORS







# IN STARK CONTRAST

TEXT BY ROBIN ANDERS SUTTON  
PHOTOGRAPHY BY MICHAEL BLEVINS

MODERN MINIMALISM MEETS KID-FRIENDLY GLAM IN THIS CHARLOTTE HOME, WHERE ANYTHING IS POSSIBLE.



In the kitchen, the homeowners' bold, risk-taking approach is on display with high-gloss black acrylic cabinetry and Black Sands Quartzite counters. Juxtaposed against the black, a stone cooktop backsplash formed from Arabascato Corchina creates a sense of drama and movement.





For a rare pop of color, McCann chose a pink acrylic frame to complement an abstract original painting by Maine artist Jenny Prinn in the breakfast room.

THE FIRST TIME designer Hannah McCann met with her Charlotte-based clients about the design for their new build, she knew the project would be a dream. First, her clients had an “incredibly organized” collection of inspiration photos. “They knew exactly what they wanted—clean lines, a modern and minimal look punctuated by glam, jewel-toned details,” says McCann. “They love high-contrast, high-gloss finishes.”

But there were also challenges. With four small children, the homeowners hoped to avoid sharp corners and incorporate pretreated, cleanable fabrics

and fibers. They also wanted to steer clear of wood tones—“nothing brown or stained.”

Rather than drywall applications, they preferred stone, wallpaper, and plaster. “They really gave me the freedom to play with finishes and sheen and texture, and then they took a stand-back approach to the design,” says McCann, a designer with Carolina Design Associates.

McCann partnered with builder Chiott Custom Homes and Smith Slovik Residential Design Group, who drew the home’s plans.



To give the homeowners a separate space from the main family room for flexible entertaining, this room features comfortable upholstery and a dark and durable vinyl wallpaper from Romo. The bar shelving is backlit with a slab of recycled glass from Walker Zanger.









The living room showcases the homeowners' style: high contrast, clean lines, and soft corners conducive to a home with small children. The balance between black and white, sleek and luxe invites conversation and play.







The result is a home where every room is a masterpiece. In the kitchen, “they took a complete and total risk with high-gloss, black acrylic cabinetry and mirrored black glass cabinets,” says McCann. Against the black sands quartzite, McCann created a statement wall with a striking slab of Arabescato Corchia stone from Pietra in Atlanta. “The exaggerated geometric movement of the stone is in stark contrast to its black surroundings, and by carrying it all the way up to cover the range hood, the lines in the stone guide your eye up through the space.”



**ABOVE:** A bold, colorful wallpaper speaks to the personality of the “glam queen of the family,” as McCann affectionally refers to one of the homeowners’ daughters. The faucet is by Brizo and the sink is Kohler.

**LEFT:** McCann designed a luxe closet off the owner’s bathroom, where a hanging light from Visual Comfort takes center stage.

One of the home’s most striking features also serves as its visual anchor—the central staircase created with six slabs of marble. “From the very beginning, my client knew she wanted a marble staircase. “It was one of the first things we purchased, and then we went back to the engineering team to be sure it could work structurally!” says McCann.

Separate from their formal living room, McCann designed a family room for entertaining, watching movies, “and playing Mahjong, their favorite game.” An indoor-outdoor porcelain floor tile from Walker Zanger unites the family room with the outdoor living areas and pool deck, and plush upholstery on the sofa and cocktail ottoman invite lounging by the stunning Sahara Noir marble fireplace with a linear, modern firebox.



Just off the upstairs playroom, the homeowners added a bunk room that sleeps eight—perfect for sleepovers and out-of-town guests.







**ABOVE:** To reflect the oldest daughter's artistic talent, McCann chose a floral wallpaper with a graphic brush stroke. A faucet, complete with two rose quartz handles, gives the room a feminine polish. **BELOW LEFT:** Attached to the spa, a walk-in sauna was the final touch in the homeowners' luxurious hammam. **BELOW RIGHT:** In the dining room, McCann's favorite room of the house, the walls are dressed in a silk wallcovering from Phillip Jeffries. Because the homeowners were adamant about livable fabrics, McCann chose eight large vinyl and brass speakeasy dining chairs to surround the ten-foot dining room table from Old Biscayne Designs in Georgia.





For the hammam spa, McCann opted for porcelain rather than marble to withstand the room's humidity. A water station mimics a spa experience with snacks and heated towels.







With the entire back wall created from a Walker Zanger onyx porcelain slab—and the remaining three walls and floors constructed from 24-inch-by-48-inch tiles cut from the same slab material—McCann was able to achieve a luxurious but highly functional and cleanable space in the owner's bathroom.

When the homeowner told McCann she wanted a hammam, McCann admits taking to Google. “She experienced it in an Atlanta hotel and wanted to recreate the vibe in her home,” says McCann. Together, they designed a Turkish bath house-inspired spa, complete with a central hot tub that can comfortably seat six to eight people. They swapped central ceiling lighting for wall-washed lighting to give the room a spa feel, and even added a water station complete with heated towels and snacks.

McCann's favorite room in the house is the bold and moody dining room, surrounded by walls dressed in

a turquoise silk wallcovering from Phillip Jeffries and brightened by a highly reflective, lacquered white ceiling. “When the sun sets and the built-in's cabinets are lit, you can see through the glass, where my client's inherited China collection is on display,” says McCann. “It changes the whole vibe of the room.”

For some designers, striking a balance between high-contrast glam and kid-friendly livability would have been an unsurmountable challenge, but this designer rose to the occasion with a stunning aesthetic where the living is easy—in every season. ♦



For the homeowners, minimalism is a way of life. Their bedroom is a reflection of those priorities. The bedwall is fully trimmed by Envision Millwork, painted in jet-black and accented with a vertical channeled headboard custom built and upholstered by Morgan Chair in a black shagreen vinyl. Mirrors over each nightstand provide drama, function, and contrast. A pink velvet and brass bench from Bernhardt Furniture rests at the foot of the bed.





To keep the black-and-white kitchen from feeling overly modern and cold, Lee incorporated the antique burnished brass chandelier by Visual Comfort, brass hardware, and brass accents on the hood to add warmth.





# LOOKING GLASS

TEXT BY BLAKE MILLER | PHOTOGRAPHY BY DUSTIN AND SUSIE PECK

TEXAS TRANSPLANTS ENLIST DESIGNER AMY LEE  
TO BRING THEIR VISION OF A MODERN BUT COMFORTABLE  
HOME ON THE LAKE TO FRUITION.





The homeowners wanted a space open to the kitchen that was comfortable but also elevated in its design. Lee accomplished this with the addition of a sofa and chaise perfect for lounging and TV watching, complemented by fur, mohair, and velvet fabrics that instantly heighten the aesthetic.



CINDY AND GREG WELLS had one request: windows. Lots of them. “It was easily our biggest criteria,” says Cindy of their new home on the coastline of Lake Norman. “We wanted windows, floor to ceiling, throughout the home.” The couple was moving from Texas, and with the home being their first new construction build, they were a bit like fish out of water. So they hired architect Mara Ludwig of Mara Ludwig Design to draw up the plans for their new home.

The Wellses, though, knew they would also need help with the interior design, and after an exhaustive online search, they enlisted designer Amy Lee of Artistic Interiors to bring their vision to fruition. Lee hit the ground running, utilizing her innate eye for design to tweak the plans to create a more pleasing overall aesthetic. “The architect had drawn up the plans, but they were still in the phase where I could come in and rearrange some of the interior architecture,” explains Lee. “I got involved heavily with that.”









Even though the laundry room is off the main hallway of the home, Lee wanted to make sure it was as stunning as all the other spaces in the home. A watercolor-patterned wallpaper by Fabricut set the tone for the space, which feels sophisticated and a touch whimsical with the addition of the star lantern by Visual Comfort.





**ABOVE:** The opposing wall in the kitchen was originally a blank space. To add interest (and functionality) to the area, Lee added custom cabinetry and a hidden door to the scullery. **BOTTOM:** Lee kept it modern in the powder room, where she incorporated tile by Florida Tile with Visual Comfort lighting and a mirror by Arteriors.



A change to the kitchen layout was the designer's first task, along with smoothing out the ceiling transitions from space to space so it was less choppy and more seamless. The addition of custom cabinetry on the side wall coupled with a hidden entry to the scullery was just one such edit that transformed the kitchen into an elevated, modern space for everyday living and entertaining.

When it came to the interior design, though, Lee looked to the Wellses for inspiration. "They really gave me the ability to start from scratch," explains the designer. "Their previous home had more of a rustic vibe. But Cindy is a spunky, classy lady. She has such great energy and is so fun, so I wanted to create a space that reflected that a bit. I wanted to give her 'refined bling' but still make it feel classic and sophisticated and not overdone."

Lee set to work incorporating subtle details such as metallic touches and gold accents throughout that provide just the right amount of "bling"







The dining room posed a challenge for Lee, as the existing dining table didn't fit the home's more modern aesthetic. So to update the space, she added smoked bell lantern pendants with an aged iron finish and low Belgian slope-arm slipcovered chairs from RH. **OPPOSITE:** The wallpaper by Romo inspired the design for the owner's suite. She kept the space simple so as not to interfere with the sweeping water views. "The windows are big and open with beautiful views of the lake," she says. "I wanted the focus on the views versus a lot of extra decor."





The homeowners requested a space to put their baby grand piano, and Lee delivered with an elevated design in the room off the entry. She kept the space clean and fuss-free with a pair of comfortable chairs by Bernhardt featuring clean, modern lines.







The shagreen wallpaper by Ralph Lauren on the ceiling of the foyer adds immediate interest to the space. The addition of the python rug by Stark coupled with a metallic accent console by Noir completely modernizes the foyer and creates an edgy vibe when guests first enter the home.

for her fun-loving clients. With the expansive windows already providing ample light in each space, Lee was able to capitalize on that by incorporating delicate touches that modernized the home. In the kitchen, she added a glazed clay brick with gold accent by Soho Studio Co. as well as an antique burnished brass chandelier, which offers a more rustic metallic touch. In the owner's bedroom, an Oly Studio chandelier boasts a gold finish.

But Lee's design was as much about color as it was about bringing in modern touches via metallic accents. Though not omnipresent in the home's design, small but powerful pops of color are layered throughout, adding just another level to the already playful but contemporary design. "I tried to keep it to one true pop of color in each room," she says. In the piano

room, there are the turquoise draperies, while the owner's bedroom features a flocked wallpaper by Romo. "That color just gives it that fresh and light feeling, too."

The home has become a gathering place for the couple and their grown children and families, all of whom come to visit for a family gathering every Fourth of July. Not only is the home a reflection of the Wellses, but it also provides them with a space that's comfortable and livable yet sophisticated in its design. "We can gather here as a large extended family and be comfortable," says Cindy. "You always hear that when you build a home it can be one of the most stressful times. But with Amy, it was seamless and so easy. Whenever we didn't know what to do or what to choose, she stepped in and helped. This home turned out beautifully!" ♦



The archways connecting the foyer with the dining room are just one example of how architect Miller Nicholson and designer Jennifer Felts incorporated a Spanish modern aesthetic into the home. The woven dining chairs by Four Hands add an organic touch.





# THE *SPANISH* EXPANSION

TEXT BY **BLAKE MILLER** | PHOTOGRAPHY BY **HEATHER ISON**

INSTEAD OF BUILDING NEW, ONE FAMILY OPTS TO RENOVATE AND EXPAND THEIR HOME TO CREATE A COMFORTABLE AND STYLISH SPACE TO GROW.

IT WAS THE CLASSIC CASE of loving the neighborhood and the house but needing more space. During the height of the pandemic, the 2,500-square-foot ranch in SouthPark's Mountainbrook neighborhood began to squeeze the family of four. The more time they spent in the house together, the more cramped it felt. "We just started to outgrow the home and knew we needed more space," says the homeowner. The search for a new home commenced during the summer of 2020, but to no

avail. "We made maybe four offers on homes, and every time we were outbid." But it was as if fate intervened for the family. "Every time that happened it kept bringing us back to our home. It made us realize that we didn't want to leave it."

So the couple pivoted and enlisted architect Miller Nicholson to draw the plans to expand the home, which included a complete renovation of the kitchen, the addition of a proper owner's en suite, and a freestanding pool house complete with guest quarters, a









**THIS PAGE, FROM LEFT:** In the powder room, the palm-print wallpaper by York brought in a tropical touch while the sconces by Regina Andrew and overhead lighting by Visual Comfort elevate the overall design. The new owner's suite features a calm and serene aesthetic with a bed and nightstands by Four Hands and a rug by Loloi.

**OPPOSITE:** The foyer originally featured a small door offering little to no light. Nicholson and Felts expanded the space to create a more gracious and light-filled entry by adding a glass front door with side lights.

kitchen, and a lounge area. "Other builders and architects wanted us to tear the house down, but Miller saw our vision for the home and lot," says the homeowner. Mint Built worked with Nicholson on the construction.

The goal was simple: create a living space that afforded the family more room—including a private space for their teenagers to hang out with friends—and an updated interior design that was more reflective of the couple's current tastes. "We wanted casual and livable, and natural earth tones with a hint of Spanish influence because my husband is Puerto Rican," says the homeowner.

The couple looked to friend and designer Jennifer Felts of *Habitude Interiors* to bring to fruition an aesthetic that seamlessly married casual and sophisticated and earthy and organic with a subtle Spanish influence. "I really looked to the Spanish aesthetic more as a way to add warmth to the space," says Felts. "They didn't want the home to feel gray and cold but instead warm and inviting."

Spanish moments can be seen throughout the home. Various architectural details such as the archways into the dining room and the plaster fireplace in the family room pair beautifully with interior touches like the Moroccan spice hue







In keeping with a Spanish modern influence, Felts opted for a Moroccan-inspired tile floor in the owner's bathroom. **OPPOSITE:** Felts took risks with color in smaller spaces like the laundry room and butler's pantry, where custom cabinetry in a cast iron hue with olive tones instantly elevates the room. A contrasting star backsplash from Palmetto Tile feels whimsical and elegant.











In lieu of a traditional all-white or black kitchen, Felts chose a subtle gray for the custom cabinetry in Sherwin-Williams Worldly Gray and Intellectual Gray. The custom cabinetry is by Hardwood Creations while the counter stools are by Four Hands.

on the custom laundry room cabinets and the natural white-oak floors. In the kitchen, leather-backed counter stools by Four Hands balance the brass-accented pendants by Visual Comfort. All of these subtle details create innate warmth and layers of interest without feeling overdone.

Ultimately, the couple's decision to stay put resulted in what the homeowner says is their dream home. "We always said we wanted to create a space where our kids, no matter how old they are, want to come home and hang out here, whether it's with us or their friends," says the homeowner. "And that's exactly what this renovation gave us." Adds Felts, "Every design choice we made was to create this cohesive, warm, inviting, sophisticated interior that was approachable and functional for their family. I think this really hit the mark for them." ♦



# The Art of Water

- Easy & Automated
- Water- & Energy-Efficient
- Saltwater Purification

**#1-Ranked Pool  
Builder in America!**  
—9 years in a row—

**Voted Most Trusted  
Low Country Pool Builder**



**100%  
Financing  
oac**



**Free brochure,  
complete estimate &  
3-D design concept**



**BLUE** since 1954  
**HAVEN**  
**POOLS & SPAS**  
**World's Largest!**



**DESIGN CENTER &  
3 DISPLAY POOLS**

**843.552.6000**

**7475 Peppermill Pkwy.**

**N. Charleston**

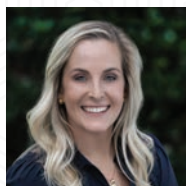
**bluehaven.com**

Lic. #G116057





LUCY BUTLER



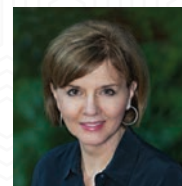
MELISSA COLLINS



LEIGH C. CORSO



CAY CRAIG



REBA HATFIELD



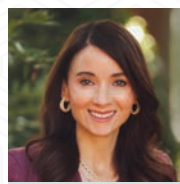
LINDA HENLEY



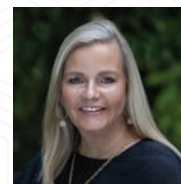
THE HUNEYCUTT  
TEAM



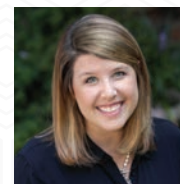
CHIP JETTON



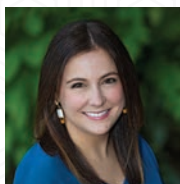
LAINA KAFITI



BECKY MCGRATH  
TEAM



HEATHER  
MONTGOMERY



LINDSAY  
REDFERN



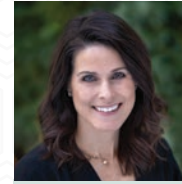
SARA ROCHE  
TEAM



LISA RUPP



LISA WARREN



HEATHER  
WOLKING



*Leading*  
REAL ESTATE  
COMPANIES  
OF THE WORLD

LP  
LUXURY  
PORTFOLIO  
INTERNATIONAL®

Built on a foundation of integrity and trust, Cottingham Chalk has a long history of serving the Charlotte community. From the beginning, our focus has been on the people. Now, in our second generation of leadership, we are a family business more than ever. And when you hire a Cottingham Chalk broker, you can rest assured that you have the entire company in your corner.

704.364.1700 | COTTINGHAMCHALK.COM





CLASSIC CHARACTER.  
STORIED STYLE.  
TIMELESS CHARM.

*Dwell*  
BY CHERYL

WWW.DWELLBYCHERYL.COM  
CHARLOTTE, NC





# RESOURCES



# ART IN THE CITY

MOMENTUM GALLERY OPENS THE ASHEVILLE SUMMER ART SEASON WITH FIREWORKS IN JULY AND AUGUST.

WRITTEN BY DANA W. TODD

Summer is for art lovers in the cool Western North Carolina mountains. When temperatures soar in the Piedmont, it's time to head up to the milder highlands and enjoy fresh air alongside the most inspiring art shows you can see anywhere in the country. "Momentum Gallery could be at home in any large city, but its progressive vibe pairs particularly well with the Asheville area," says gallery owner and curator Jordan

Ahlers, who is prepping the 15,000-square-foot two-level gallery for four summer exhibitions. As a destination gallery, visitors from across North Carolina and tourists nationwide travel to Momentum Gallery to see the latest contemporary art. With its summer season running June 29 to August 26, this year will feature three solo shows and one group textile exhibition.



WARNER PHOTOGRAPHY



“MOMENTUM GALLERY  
COULD BE AT HOME IN ANY  
LARGE CITY, BUT ITS  
PROGRESSIVE VIBE PAIRS  
PARTICULARLY WELL WITH  
THE ASHEVILLE AREA.”

—JORDAN AHLERS

Oil painter Paul Sattler will showcase his latest narrative compositions reinterpreting historical paintings, often inspired by fairy tales and children’s literature. “His paintings need an extended look to really examine everything in them,” says Ahlers.

Another solo exhibition will feature the cyanotype paintings of Casey Roberts, whose dreamy, Zen-like compositions are simple but elegant, according to Ahlers. Animals play a leading role in Roberts’s large-scale paintings, as he also explores trees, water, and sky as subject matters, leaning on silhouettes and selective color to tell a story.

Glass artist Christina Bothwell transports her art to Momentum for display this summer, as well. Using cast glass, raku clay, and found objects, Bothwell creates chunky, figurative yet ethereal sculptures that often combine animal



and human figures. For added interest, some of her sculptures feature objects embedded inside her solid cast-glass figures, and sometimes she even adds paint or mosaic tile to her sculptures. “Her art is playful and based on dreamlike and spiritual imagery,” says Ahlers.

A group show of six artists will round out the summer season with an exhibit featuring a variety of textile wall art, including weaving, felting, embroidery, and dyed fabric. For example, artist Crystal Gregory of Lexington, Kentucky, will show her handwoven fabric art embedded into concrete.

In addition to the special summer exhibits, Momentum Gallery continues to showcase the work of the eighty artists it represents. “From living legends to emerging artists, Momentum has a diverse collection of material-based work focused on glass, wood, textiles, and metal,” says Ahlers. “Several of our artists have won Smithsonian awards. We have an engaging atmosphere, which, combined with our artwork variety, makes for a robust and multifaceted experience for visitors.”

As a fourth-generation Asheville native who has worked in the art business for twenty-five years, Ahlers is eager to show gallery visitors how art can transform their homes and lives. “Art generally evokes a sense of happiness and well-being, and at Momentum, we strive to convey a sense of wonder and discovery with fresh and stimulating artwork that gives people a chance to slow down and look at the details.”◆



Discover **MOMENTUM GALLERY** at 52 BROADWAY STREET  
in Asheville or visit **MOMENTUMGALLERY.COM**.



# BUNGALOW *BEAUTY*

THE MAJESTIC BATH AND DESIGNER WANDA HORTON  
CREATE MAGIC IN MONROE'S HISTORIC DISTRICT.

WRITTEN BY BRANDY WOODS SNOW



When Kris and Carmen Carlson began searching for a home not long after their wedding, they set out to find an older, historic property where their family could flourish while they grew their business. Initially attracted to the Dilworth area, they changed direction upon finding the perfect circa-1914 Craftsman bungalow in the historic district of Monroe. As their family's needs expanded, they realized their kitchen, a high priority area, was lacking the space, upgrades, and flow necessary for entertaining. Likewise, the family desperately needed expanded bathroom space beyond the single bathroom that served the entire upper level.

The Carlsons met with designer Wanda Horton, and when they felt certain Horton embraced their vision and could bring it to life, the renovation began.

Being extensive travelers, the Carlsons paid attention to the details of their lodgings and the features that enhanced their

stays. "We developed an aesthetic we refer to as California Cool—a midcentury-meets-southern craftsman with organic colors and textures. We also added a little glam to certain spaces!" says Horton.

The aesthetics were only part of the picture. The renovation required extensive restructuring and expansion of the home's bones. "When you begin to dismantle spaces connected to others, it's kind of like an archaeological dig, replacing old pipes, knob and tube wiring, and addressing structural supports," says Horton. "It prompted us to work our way through bathrooms, sleeping areas, living spaces, and basically the entire home."

Horton worked in tandem with Daphne Friday, showroom consultant and interior designer at The Majestic Bath, to



LAURA SUMRAK





“THE MAJESTIC BATH WAS MY FIRST CHOICE FOR SELECTING AND SUPPLYING ALL OF THE PLUMBING FIXTURES.”

—WANDA HORTON

source distinctive solutions for the design. “The Majestic Bath was my first choice for selecting and supplying all of the plumbing fixtures,” says Horton. “Daphne is a walking encyclopedia when it comes to their vast array of vendors, and I knew we could bring our plans to her for sourcing more artisanal types of fixtures and finishes.”

In the kitchen, a modified open-concept design was implemented to promote connection. The room’s color palette began with the selection of distinctive Brazilian exotic stone slabs. The hammered copper hood is a nod to the homeowners’ favorite finish. A banquet-style window seat includes a tufted back and performance velvet cushions for everyday comfort and use. The pull-out drawers beneath offer stylish storage. The primary bath, created by merging

three small areas and a hallway, became a charming, luxury bath escape. Inlaid marble and brass tiles produce a stunning bathtub backsplash. The zero-entry steam shower, adorned with 24-carat gold-plated fixtures and custom shower door pulls, adds function and glamour. The guest bath, with floor-to-ceiling patterned tile and a demilune vanity, proves small spaces can pack major drama and interest.

Horton says the renovation has been a major transformation for the Carlsons’ home and daily life. “There’s still a comforting familiarity of the home they originally purchased, and yet it’s like a new build, too. The interior finishes have elevated their surroundings in a manner that brings them as much excitement as traveling to a beautiful boutique hotel.” ♦

For more information, call 704-366-9099  
or visit [THEMAJESTICBATH.COM](http://THEMAJESTICBATH.COM).



# FADE TO BLACK

KITCHEN CABINETRY TRENDS HAVE TURNED TO THE DARK SIDE.

WRITTEN BY BRANDY WOODS SNOW



It's an oft-repeated misconception: black makes a room look smaller. But it's a myth—one that designers are demonstrating can be easily dispelled with every set of black cabinets installed in a kitchen.

"Versatile and flexible, black is a neutral that creates drama, warmth, and interest in any room. It's a great color that goes with many different style and color combinations," says Kyong Agapiou, lead designer of DCI Home Resource.

Used as the main color or as an accent with other finishes and hues, black can impart a wide range of moods into a space, from cozy comfort to modern flair to glamorous elegance. But using black in project design isn't a new concept. According to Kyong, "For years, especially in commercial applications, we used black on ceilings to make them 'disappear' and recess into the background. Now, people are realizing that their white cabinetry can look sterile and not have that lived-in feel they're after."

Used in Asian modern design, black is a staple where natural influences and classic modern design merge. It connects seamlessly with current trends focused on utilizing more nature-inspired colors like warm-toned beiges, greens, reds, oranges, and blues. "Homeowners are gravitating toward a deeper connection to their environment and others by seeking inspiration from nature. One way we're finding this harmony is by pairing black cabinetry with wood elements to evoke a sense of natural calm and relaxation," says Kyong.

In addition to wood accents, lighting is another crucial element when working with black cabinetry in design. Kyong says that while having great general lighting in the space can help keep the room light and bright, the implementation of pendants and other accent fixtures can also be critical in balancing the darkness of black cabinetry. For instance, pendants over an island create a bright area for working and food prep while also adding character. Lighting installed under floating shelves can accent collections as well as increase countertop lighting for prepping and cooking.





“BLACK IS A NEUTRAL THAT CREATES  
DRAMA, WARMTH, AND INTEREST IN ANY ROOM.”

—KYONG AGAPIOU

It is important to note that all blacks are not the same—they come in a variety of hues, and selecting the appropriate one for a particular space is essential. Kyong meets with clients in their spaces to become better acquainted with their personalities, their unique home styles, and their project needs to ascertain which hue works best. “Depending on the time of day, reflections in the room, and house direction, the tones can change, so it’s important to select colors where they’ll be used. The finish—either glossy or matte—should also reflect the homeowner’s desired aesthetic. Every choice

is individual, and we make selections based on the client’s personal style and preferences.”

Kyong notes that DCI Home Resource is seeing a notable uptick in the desire for black cabinetry and doesn’t anticipate the trend ending anytime over the next few years. “Black can be timeless. It’s an excellent way to make the kitchen look modern and elegant, and a great neutral to use with many different types of textures and colors. It’s one of the most versatile hues and can make people feel relaxed and comfortable in any space.” ♦



# CLEVER CRAFTSMAN

CRAFTSMAN CABINETS & FURNITURE OFFERS CUSTOM PIECES DESTINED TO BECOME FAMILY HEIRLOOMS.

WRITTEN BY LEE RHODES

Great craftsmanship results in furniture with great character. After all, when pieces are handcrafted by artisans who employ their distinct skills and time-honored techniques, the pieces come to life and have a story to tell.

At Craftsman Cabinets & Furniture, located in Hudson, character is the name of the game. Whether you choose to browse the aisles for furnishings and home decor or place a custom order, nothing is mass produced or part of an assembly line. And nothing originates outside of America, as the company is committed to partnering with small businesses in the USA.

Custom orders comprise the bulk of the business, as people increasingly seek products that have distinctive elements of character and style. “If you need a twenty-foot dining table, we can make you a twenty-foot dining table,” says co-owner Charles Sparks.

There’s a caveat that comes with this approach, but it’s a positive one. “Because it’s natural wood and built to order, each piece is unique,” says Sparks. “If someone wants six dining room chairs and later wants two more, that batch of wood will be different. Every order is going to be special.”



CRAFTSMAN CABINETS & FURNITURE





“YOUR IMAGINATION IS THE LIMIT.”—CHARLES SPARKS

Whether you only have a vague concept or know exactly what you want, the designers at Craftsman Cabinets & Furniture can guide you. The store has display models to spark ideas, and a designer can come to your property to measure and evaluate your space. They will consult with you on wood choice, which can range from oak, maple, cherry, poplar, or hickory, as well as a plethora of stain and hardware options. For chairs, loveseats, and sofas, the store’s upholstery options can be completely customized to your desired dimensions and fabrics. Upon agreement on the final design, the build process is about eight weeks, with mostly Amish builders who partner with Craftsman Cabinets & Furniture to create your high-quality, heirloom-caliber piece.

When the store opened a few years ago, the owners had been selling furniture, including a predominance of Amish furniture, for decades. It was a natural progression to work with Amish builders on custom orders, including some that focus exclusively on building within and for kitchens. Another natural progression occurred as the store’s repeat business grew, and clients who originally worked with Craftsman Cabinets & Furniture on their bedrooms, living rooms, and dining rooms began inquiring about their kitchens.

“We like to be there for customers throughout the whole house,” says Sparks. “That’s how we got into kitchens when we weren’t originally doing them.”



Although the store sells Viking kitchen appliances along with cookware and kitchen decor, woodworking is their focus—not surprisingly—including kitchen cabinetry that is at once eye-catching and functional. Craftsman Cabinets & Furniture excels at the warmth and beauty of live-edge kitchen counters and islands, which reveal the wood’s natural characteristics, as well as custom wood pullouts that give every item a home without wasting a bit of space.

“And if there’s something that’s not a standard option, our builders can create it,” concludes Sparks. “Your imagination is the limit.” ♦

To learn more, call 828-572-4424, check out [CRAFTSMANCABINETSANDFURNITURE.COM](http://CRAFTSMANCABINETSANDFURNITURE.COM), or visit 2994 HICKORY BLVD. in Hudson.





# DESTINATION BY DESIGN

BY ELAINE GREENE

FOR OVER THIRTY YEARS, A. HOKE LTD. HAS STRIVED TO BE THE PREMIERE DESTINATION FOR INTERIOR DESIGNERS SEEKING THE HIGHEST QUALITY HOME FURNISHINGS AND ACCESSORIES. WE DO OUR BEST TO BE A TRUSTED RESOURCE DESIGNERS CAN RELY ON.

Our showrooms include beautiful workspaces where designers can meet with clients and have access to thousands of samples. In addition, each year we host a series of educational events featuring the top experts in our industry to help designers gain knowledge and stay abreast of new trends and technologies.

Currently, designers are facing challenges with furniture delivery times. Manufacturers have suffered pandemic-related labor shortages and supply chain issues leading to longer furniture wait times. To alleviate some of the deadline pressures, A. Hoke Ltd. is stocking our showrooms with beautiful items available for immediate installation. Our goal is to provide instant access to items a designer may need quickly. "I've picked up several pieces," says designer Eliza Stoecker of Fleur Interiors, who has found this to be a great solution. "It's nice to have this as a resource, especially for accessories, tables, and lamps. It's made things so much easier for designers!"



NEST PHOTO STUDIO

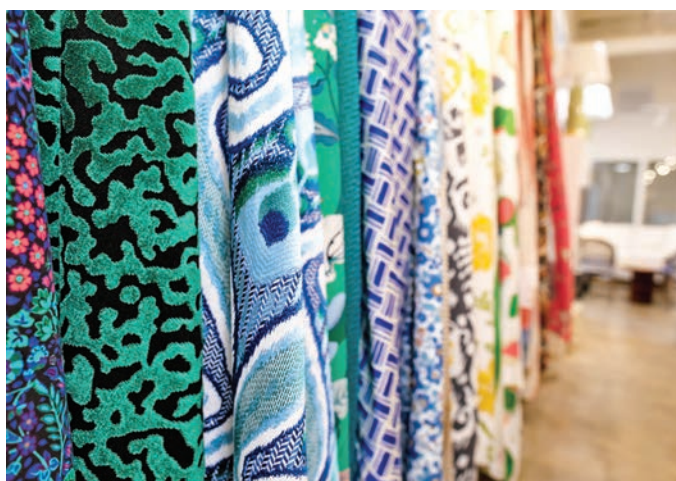




In our showrooms, designers will see a much more expansive collection of sofas, sectionals, chairs, and case goods they can select right off the floor. We have a variety of styles from manufacturers including EJ Victor, Lee Industries, and Century Furniture. This feature has been well received by designers, including Melissa Goodwin, owner of Design Group of North Carolina. “The great thing about shopping A. Hoke’s furniture inventory is the fact that they stock many different styles and types of furniture, so you can actually furnish an entire room from their offerings,” says Goodwin. “The icing on the cake? The staff is very knowledgeable, and they make it easy for us to select and sell the pieces.”

“IT’S NICE TO HAVE THIS  
AS A RESOURCE, ESPECIALLY  
FOR ACCESSORIES, TABLES,  
AND LAMPS. IT’S MADE  
THINGS SO MUCH EASIER  
FOR DESIGNERS!”

—ELIZA STOECKER



We’ve also had requests for bedroom furnishings, and to meet the need, we created a special section in our Charlotte showroom filled with beautiful beds, side tables, bedding, and other items that are immediately available. For designers needing accent pieces, we have a vast selection of accessories, including mirrors, lamps, and more. We also expanded our wall art choices and incorporated an “Art Hall” with numerous pieces on display.

We are pleased to continue being a top destination for designers in the Carolinas, providing beautiful home furnishings and making their jobs a little easier. ♦

ELAINE GREENE is the president of A. HOKE LTD. Visit their designer showrooms in Charlotte and Raleigh, call 704-358-0277, or explore [AHOKELIMITED.COM](http://AHOKELIMITED.COM).





# MID-MOROCCAN MIX

BY BETH CONANT

IT DOESN'T HAPPEN OFTEN THAT I GET THE CHALLENGE OF MIXING MIDCENTURY WITH MOROCCAN. MY JOB IS NEVER DULL, AND THIS ROOM, I LOVE.

When asked for a Moroccan mix, I immediately thought of one of my favorite designers, Martyn Lawrence Bullard, whom I had the pleasure of meeting at his studio in West

Hollywood. He created a memorable line of wallpaper inspired by tile work seen on his many trips to Marrakesh.

So I started there, on the walls and ceiling. The door-pattern mural was the focal point in this space, and when it went up, I was more than excited. The next challenge was pulling in the right furniture. We were looking for pieces that would speak to each other yet be completely different. I found a low vintage midcentury sofa recovered in red velvet



MEKENZIE LOU





## MY JOB IS NEVER DULL, AND THIS ROOM, I LOVE.

and a complementary occasional chair in the same velvet hue with a dramatic graphic pattern. I then added a low brass coffee table that's just the right size to display my client's existing rug, from which the room's colors were pulled. I scored big with the vintage camel saddle, and mixed in several new items like another side chair, the lamps, the mirrors, the tall brass-front armoire, and a sleek brass chandelier.

These unique pieces, paired with the striking wallcovering, create a showtopping space.

Every client, every request, every home is different. Thinking outside the box, doing my research, and searching for something special is the key to creating stunning rooms like this one. ♦







# SUMMER CRUSH

BY JIM NOBLE

THE SWEET TASTES OF SUMMER ARE HERE, AND FLAVORS ARE RICH AND PLENTIFUL.

We're surrounded by tomatoes, okra, field peas, squash, corn, peppers, peaches, berries, and melons—the glorious summer crops we can find at farmers markets, on restaurant menus, or, in some cases, in our own gardens.

For me, the tomato sandwich reigns supreme, made specifically with a backyard-grown German Johnson tomato. It's what I look forward to most each summer. (Yes, you can find tomatoes at the grocery store year-round, but in the heat of summer there is no comparison between those and a fresh, local tomato.) German Johnsons are heirloom tomatoes with a pinkish-red hue that are native to North Carolina and can







grow to be well over a pound. A center-cut slice is easily large enough to cover a piece of bread.

The tomato sandwich makes a chef out of any of us. The perfectly ripe summer tomato, a couple swipes of Duke's Mayo, and a loaf of really good bread (maybe Copain's seeded loaf or the Pain au Lait) is all you need.

My second summer crush is field peas, which come in many different varieties, including crowder peas, Sea Island red peas, Pinkeye Purple Hull, and probably a dozen others. These hearty legumes are rotational crops that put nitrogen back into the soil, providing nourishment to us and renourishment to the soil. We serve them in our Hoppin' John at The King's Kitchen and alongside barbecue at Noble Smoke. At home, you can cover them in a pot with water, add some bacon, salt, and pepper, and let them simmer until tender.

These tastes take me back to my granddaddy's garden outside of High Point. We would shell peas and snap green beans, slice tomatoes, and shuck corn. I'm a carnivore, but we'd indulge in a table full of fresh, simply prepared vegetables, and, to this day, those are some of the very best meals I've ever had. It's all proof that the best things in life are not only simple, but also worth the wait. ♦

THE BEST THINGS IN LIFE ARE  
NOT ONLY SIMPLE, BUT ALSO  
WORTH THE WAIT.





# ARTS & EXHIBITIONS SPOTLIGHT



## JAZZY WESTINGHOUSE SOLO SHOW

SHAIN GALLERY

July 14–26

shaingallery.com

British-born contemporary oil painter Jazzy Westinghouse lives on the Suffolk coast. She spent her childhood living in both Asia and America, which significantly influenced her painterly style. As a young child growing up in the tropics, Westinghouse had many pets, including a Kookaburra; it was this beloved and characterful bird that started her love affair with birds and nature. Other early influences include Ken Done, Paul Gauguin, and Peter Doig. Westinghouse also spent time in Florence with her grandfather, learning about the old masters and their unrivalled techniques. Her paintings of birds on ceramic pots share a similar formal awareness and technical sensitivity.

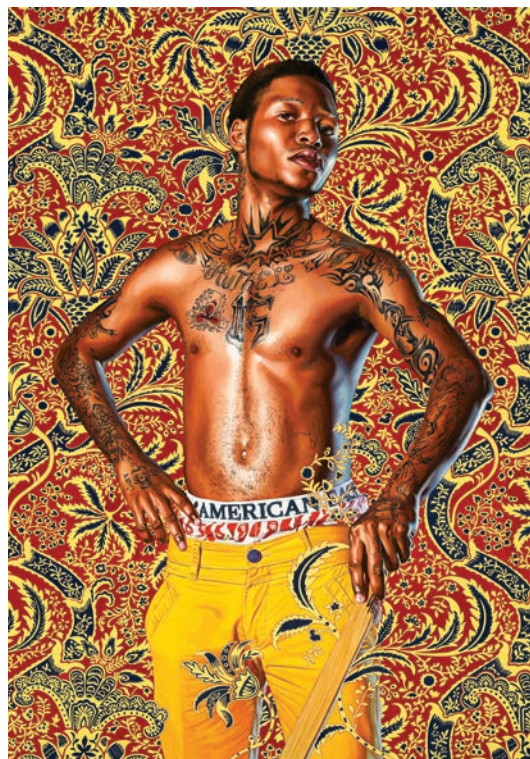
## SEEING STARS

HARVEY B. GANTT CENTER

Through September 24

ganttcenter.org

Over the past twenty-five years, Hedy Fischer and Randy Shull have amassed one of the most robust collections of contemporary art in North America. Built with passion and focus, their collection reflects a shared commitment to support authentic, diverse voices in the arts, and to champion important social justice issues. *Seeing Stars* highlights some of the traditionally underrepresented artists in the Fischer/Shull Collection and includes groundbreaking works by Kehinde Wiley, Simone Leigh, Kerry James Marshall, and many others.



## SUMMER SELECTIONS

ANNE NEILSON FINE ART

July 10–August 19

anneneilsonfineart.com

*Summer Selections* features a fresh body of work from prolific Argentinian artist Daniela Schweitzer. Born and raised in Argentina, Schweitzer's figurative abstractions reflect the appreciation for human existence and the internal feelings of the

people around her. In conjunction, ANFA is introducing up-and-coming figurative artist Juniper Briggs. Briggs pulls from both classical art and cubism to explore the figure with themes of brokenness and beauty. Her paintings encompass feelings of longing, introspection, joy, gratitude, strength, and surrender. Join Briggs for a chat while enjoying coffee and mimosas on August 10 from 11 a.m. to 2 p.m.

CLOCKWISE FROM LEFT: ART BY JAZZY WESTINGHOUSE;  
ART BY KEHINDE WILEY; ART BY DANIELA SCHWEITZER



NOW FEATURING  
**CHRISTOPHER GROVES**

Christopher Groves, Overview, 50 X 77, Oil on Panel



**JUNIPER BRIGGS      DANIELA SCHWEITZER**

Juniper Briggs, The Lemon Tree, 48 X 36, Mixed Media on Canvas



Daniela Schweitzer, Summer, 60 X 40, Acrylic on Canvas



**ANNE NEILSON FINE ART**  
info@anneneilsonfineart.com | 704.496.9181 | anneneilsonfineart.com  
721 Governor Morrison St, Charlotte, NC 28211



# IMPACT Your Outdoor Living Experience



DESIGN FIRM: THE ECLECTIC TIGER  
HEATHER ISON PHOTOGRAPHY



**IMPACT FINE DESIGN**  
CUSTOM CABINETRY & CLOSETS

**CALL TODAY** TO CONSULT WITH OUR  
EXPERIENCED TEAM ON YOUR  
UPCOMING PROJECT.

**VISIT OUR SHOWROOM IN SOUTHBEND**

1300 S Mint St, Ste 110, Charlotte, NC 28203 | Office 704.778.6814

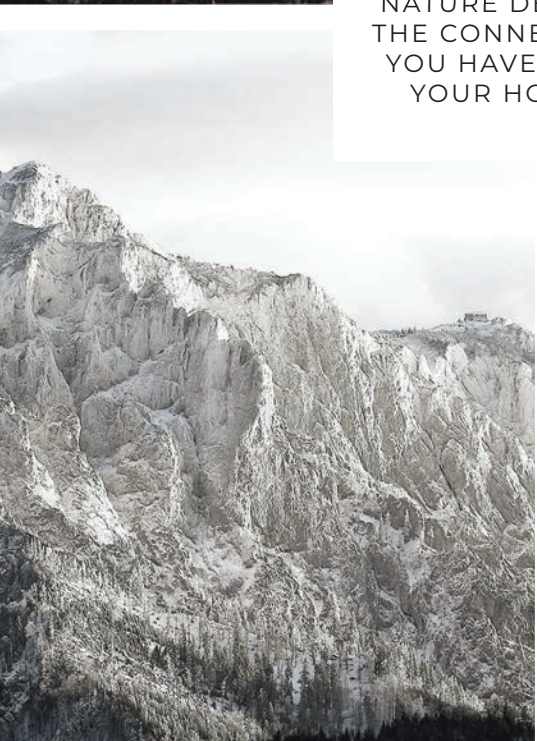




DESIGN FOR YOUR LIFE'S JOURNEY



COLOR, LIGHT,  
PATTERNS AND  
NATURE DEEPEN  
THE CONNECTION  
YOU HAVE WITH  
YOUR HOME.



CLARKANDCLARKINTERIORS.COM  
CHARLOTTE, NC





# Bring your *curiosity.*

We'll bring you the showroom  
experience you've been waiting for.

When you walk through our doors, bring an idea.  
A dream. A vision. Our showroom is designed to  
inspire you with on-site chefs, product experts,  
and exclusive events - all so you can fully  
experience everything your kitchen can be.

Scan to book  
an appointment.



Charlotte • 127 W Worthington Avenue, Suite 180, Charlotte, NC 28203 • 704-375-6025



— SHOWROOM —





# CRAFTSMAN Cabinets & Furniture

KITCHENS | LIVING | DINING | BEDROOM | OFFICE



## Custom Amish-Built Cabinets & Furniture

Available in Maple, Cherry, Hickory, Reclaimed Barnwood, and more

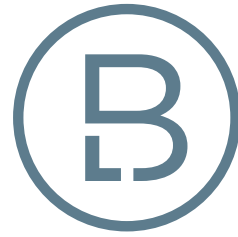
U.S. 321 North between Hickory & Blowing Rock | 2994 Hickory Blvd, Hudson, NC 28638  
828.572.4424 | [CRAFTSMANCABINETSANDFURNITURE.COM](http://CRAFTSMANCABINETSANDFURNITURE.COM)

All of our products are proudly  **MADE IN AMERICA** 









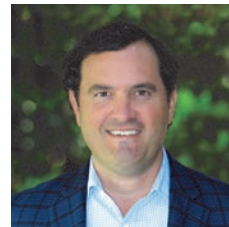
**BRANDON LAWN**  
REAL ESTATE

---

**SOLD**

**2139 MALVERN ROAD  
CHARLOTTE | NC | 28207**

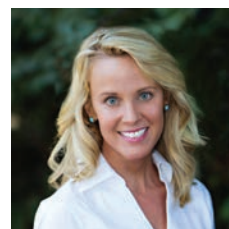
**\$2,700,000**



**BRANDON LAWN**  
Broker | NC | REALTOR®  
704.904.3820



**AMY WELTON**  
Broker | NC | REALTOR®  
704.907.5867



**CECELIA MCNORRILL**  
Broker | NC | REALTOR®  
404.308.1043





# KITCHEN PERFECTION

BRING DESIGN FREEDOM TO THE HOME WITH A COMPREHENSIVE SUITE  
OF LUXURY APPLIANCES THAT COMPLEMENT THE WAY YOU LIVE.



## FISHER & PAYKEL



QueenCityOnline.com  
7 Convenient Locations  
Monday - Saturday 9am - 7pm, Sunday Noon-6pm

